

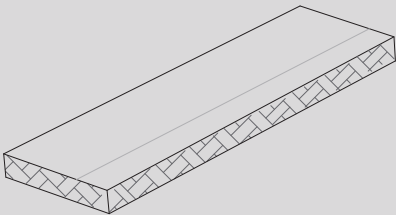
FXN 1617

FLEXIBLE NEON

ROTARY MOUNTING BRACKET

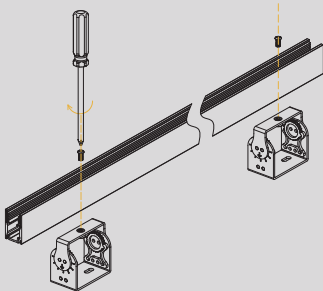
Friendly Reminder – Please read instructions carefully before operation

➤ Step 1



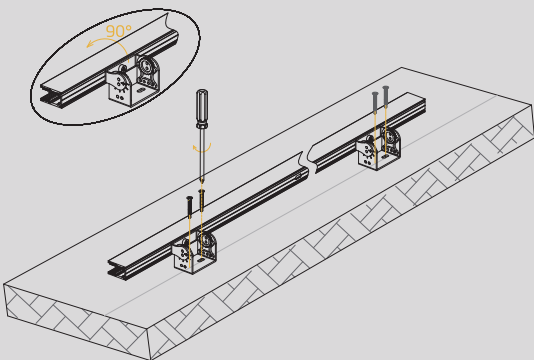
Mark the installation position on the mounting surface.

➤ Step 2



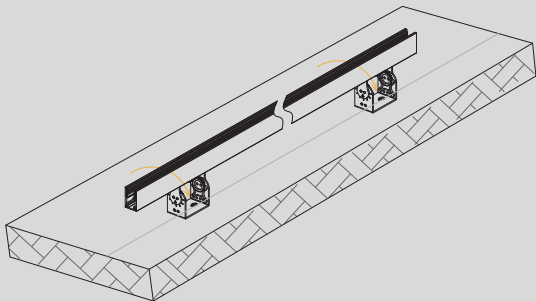
Fix the mounting profile to the rotary locking bracket by screws.

➤ Step 3



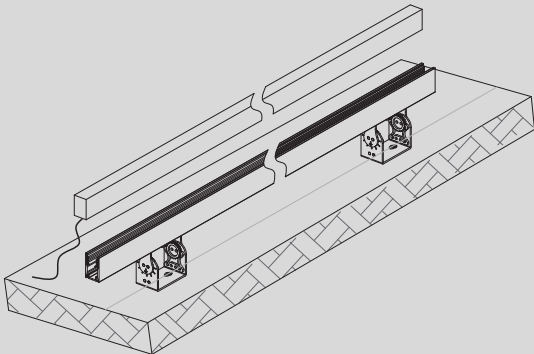
Lay the mounting profile aside and fix the rotary locking bracket to the mounting surface by screws along the marking line.

➤ Step 4



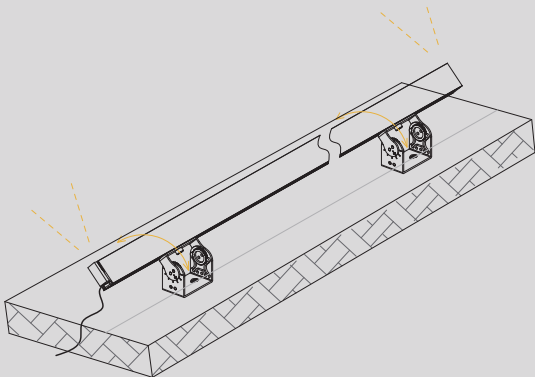
Turn back the mounting profile.
Please skip to step 7 for length extension (one piece of light crossing multiple pieces of mounting profiles).

➤ Step 5



Install the light orderly and leave the front connector and end cap outside of mounting profile .

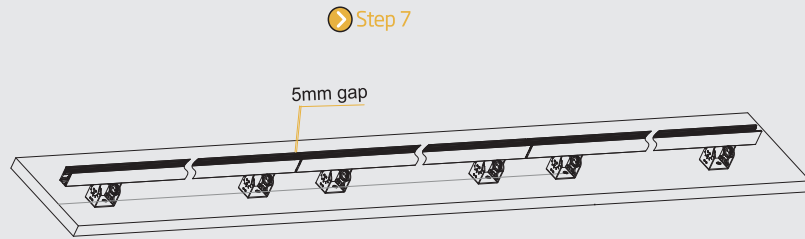
➤ Step 6



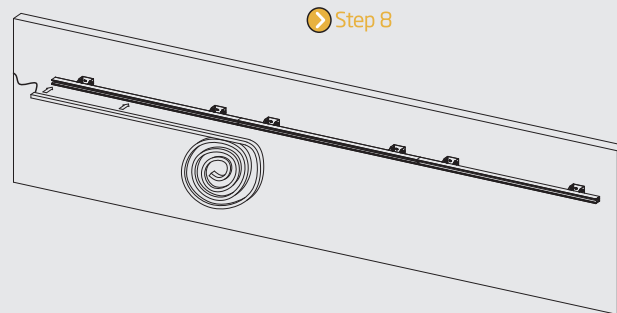
Power on the light and rotate the mounting profile to the desired lighting angle.

FXN 1617 | FLEXIBLE NEON
ROTARY MOUNTING BRACKET

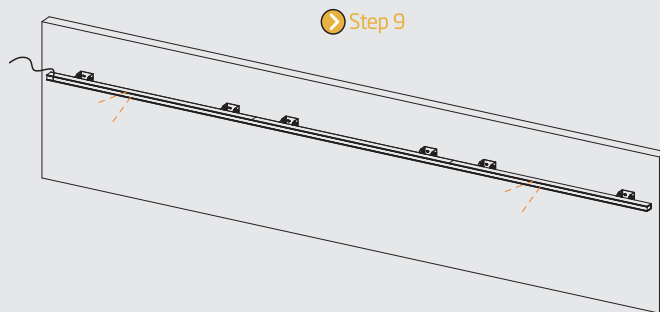
For length extension (one piece of light crossing multiple pieces of mounting profiles)



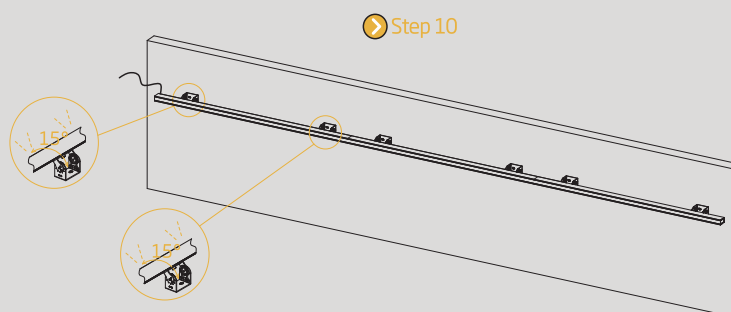
Please reserve 5mm gap between mounting profiles in case of contraction and expansion.



Fit the light into the first piece of mounting profile and keep the remaining lights coiled. Next repeat step 6 to adjust the lighting angle.



Adjust the rest of mounting profile to the same angle and then install the coiled light orderly.



If you need further adjustment after installation, please fine tune rotary locking bracket 15 degree each time one by one in case of twisting on lights.